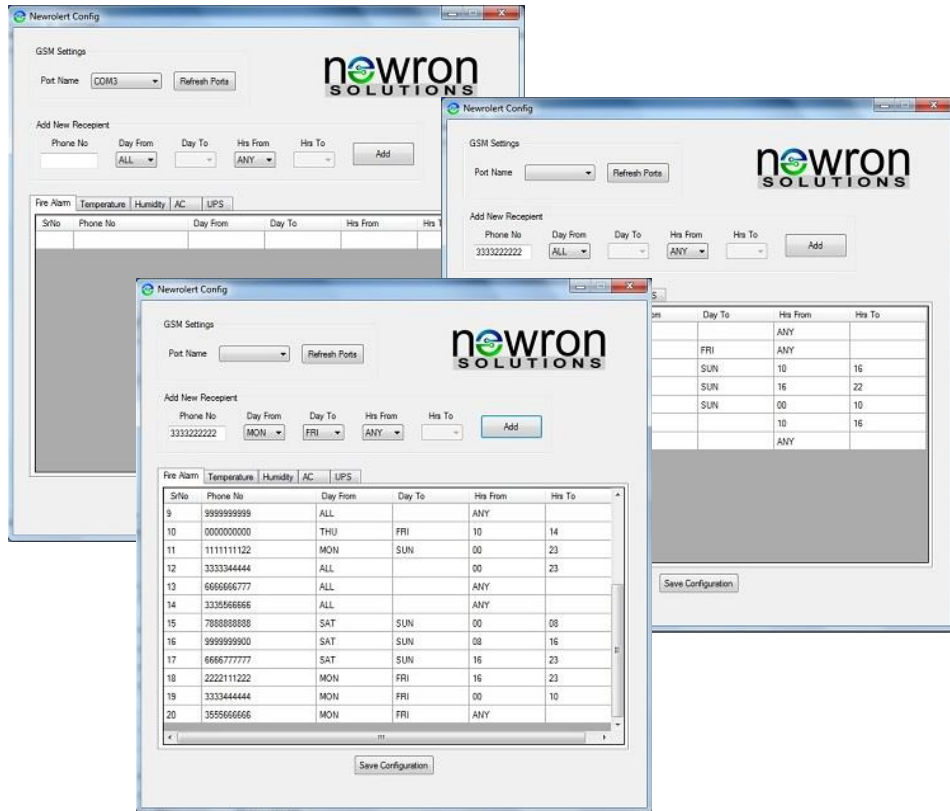


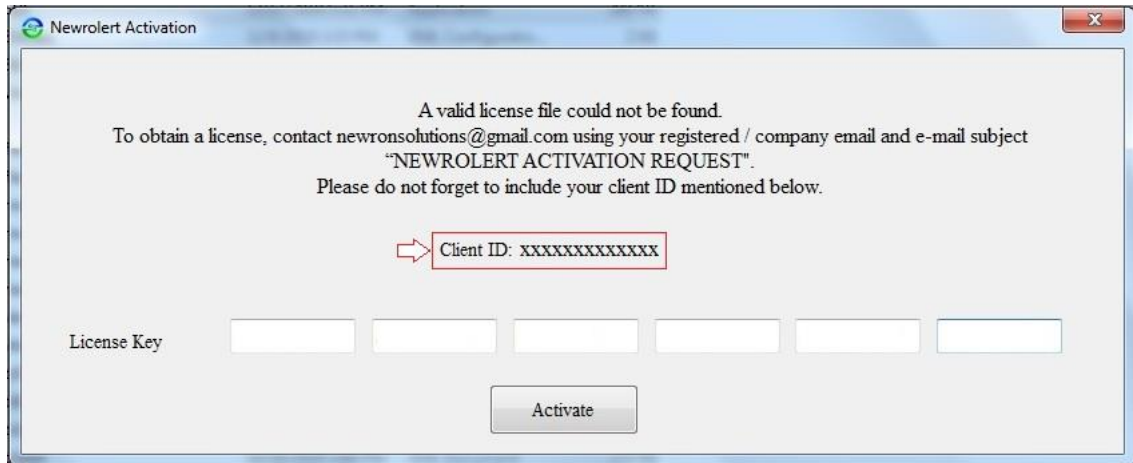
# USER GUIDE



## NEWROLERT

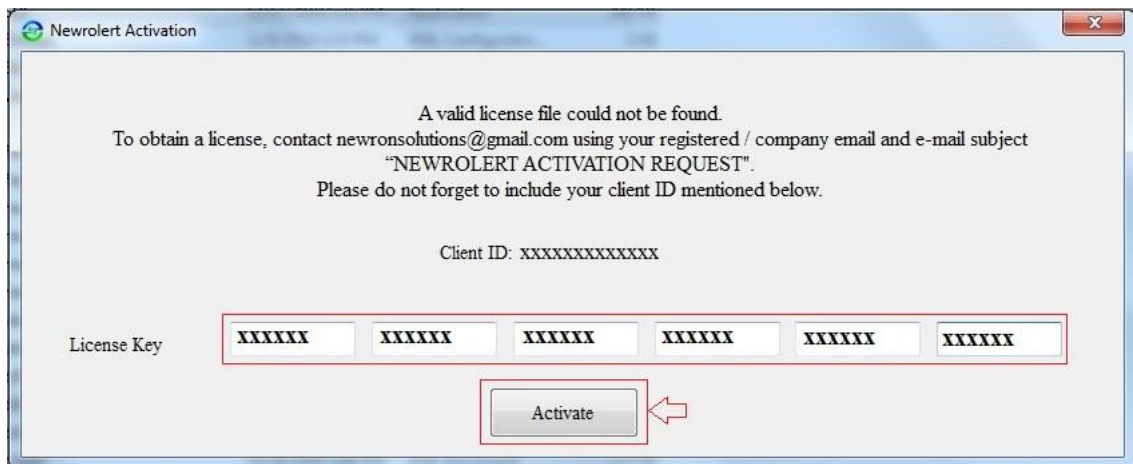
## 1. Newrolert Activation

- Run **NewronSMSUI**, mail your **Client ID** to **newronsolutions@gmail.com** using your registered / company mail id with subject “NEWROLERT ACTTIVATION REQUEST”



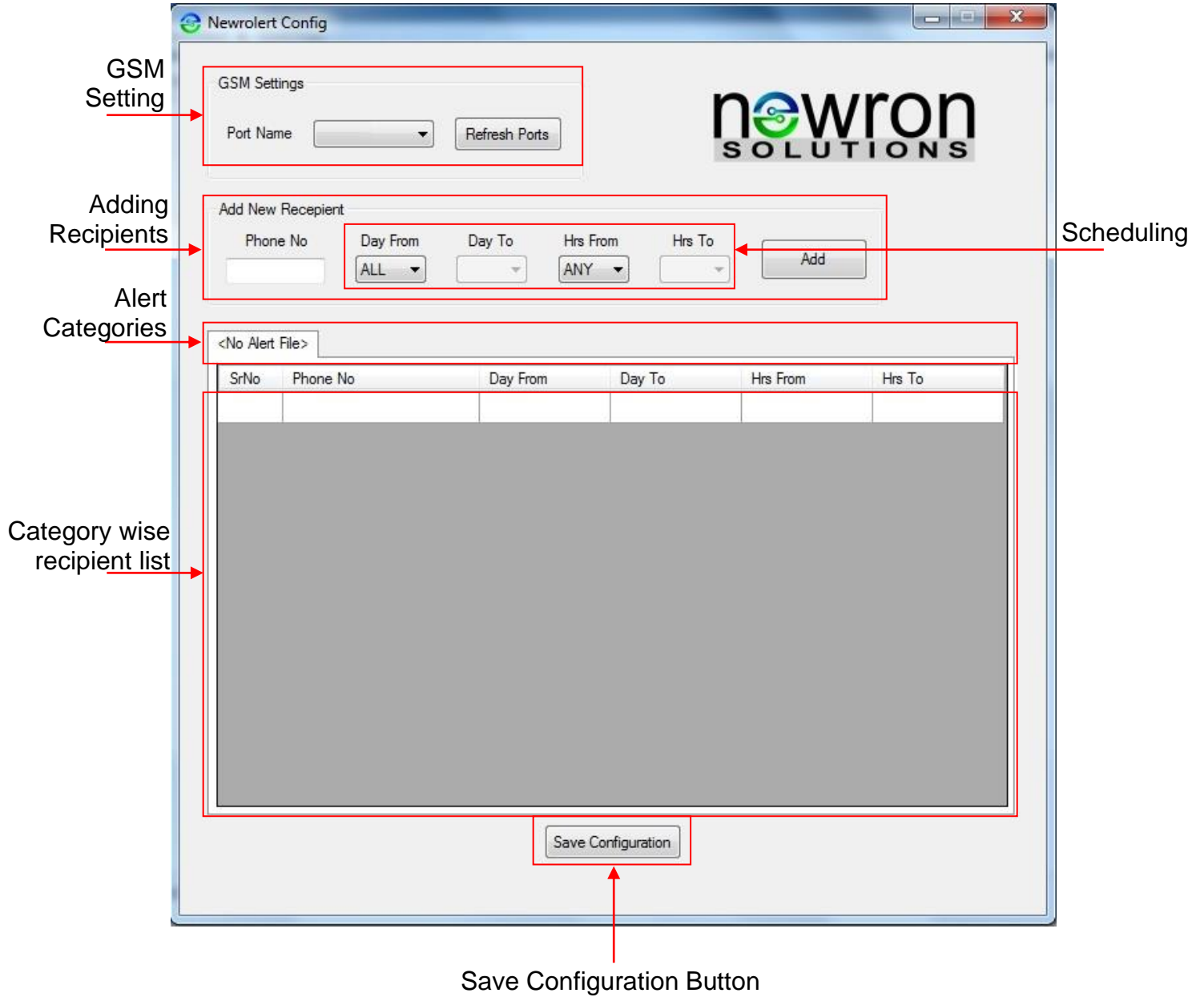
You will receive License Key within 24 hrs of request.

- After you receive license key, again run **NewronSMSUI** and enter the key in the required field and click on Activate button to activate the product.



## 2. User Interface

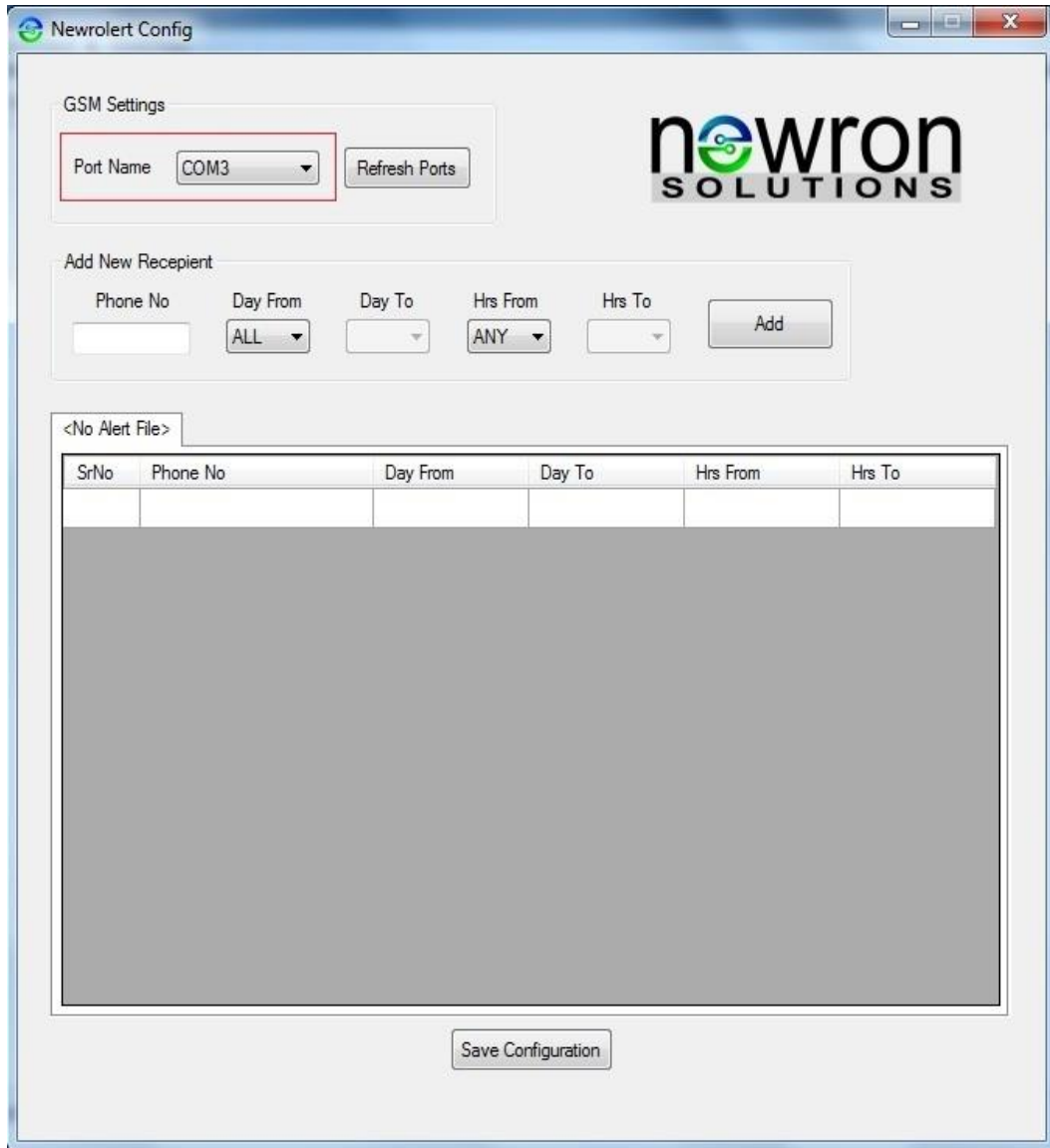
- Once product is activated, every time you run **NewronSMSUI** a “**Newrolert Config**” window will be opened as shown below.



**Note:** Every time when changes are made, configuration should be saved. To save the configuration press “**Save Configuration**” button.

### 3. GSM Settings

- All the available ports are reflected in the user interface under “**Port Name**”, now select the appropriate port name where the GSM modem is connected from the drop down list.



#### 4. Adding Recipients

- Enter phone number in the appropriate field, select Day From - Day To and Hrs From – Hrs To, to schedule corresponding recipient to receive SMS during alerts.

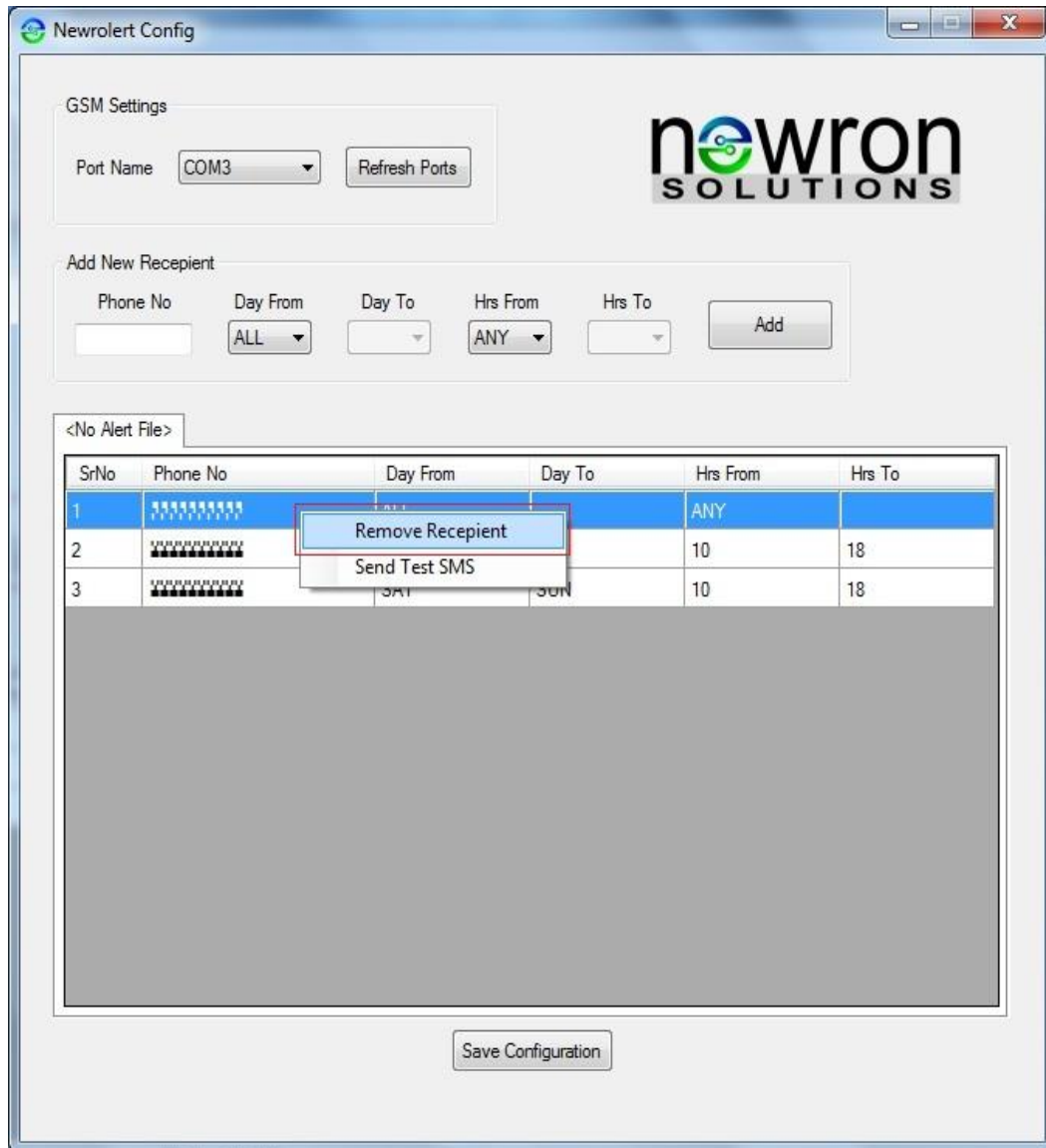
The screenshot shows the 'Newrolert Config' application window. At the top right is the 'newron SOLUTIONS' logo. Below it, the 'GSM Settings' section includes a 'Port Name' dropdown menu set to 'COM3' and a 'Refresh Ports' button. The 'Add New Receptient' section features a form with fields for 'Phone No' (masked with asterisks), 'Day From' (dropdown set to 'SAT'), 'Day To' (dropdown set to 'SUN'), 'Hrs From' (dropdown set to '10'), and 'Hrs To' (dropdown set to '18'), along with an 'Add' button. Below this is a table with the header '<No Alert File>' and columns for 'SrNo', 'Phone No', 'Day From', 'Day To', 'Hrs From', and 'Hrs To'. The table contains three rows of recipient data. At the bottom of the window is a 'Save Configuration' button.

SrNo	Phone No	Day From	Day To	Hrs From	Hrs To
1	XXXXXXXXXX	ALL		ANY	
2	XXXXXXXXXX	MON	FRI	10	18
3	XXXXXXXXXX	SAT	SUN	10	18

- We can add up to 20 recipients in each category
- Press **“Save Configuration”** button after adding the contacts.

## 5. Removing Recipients

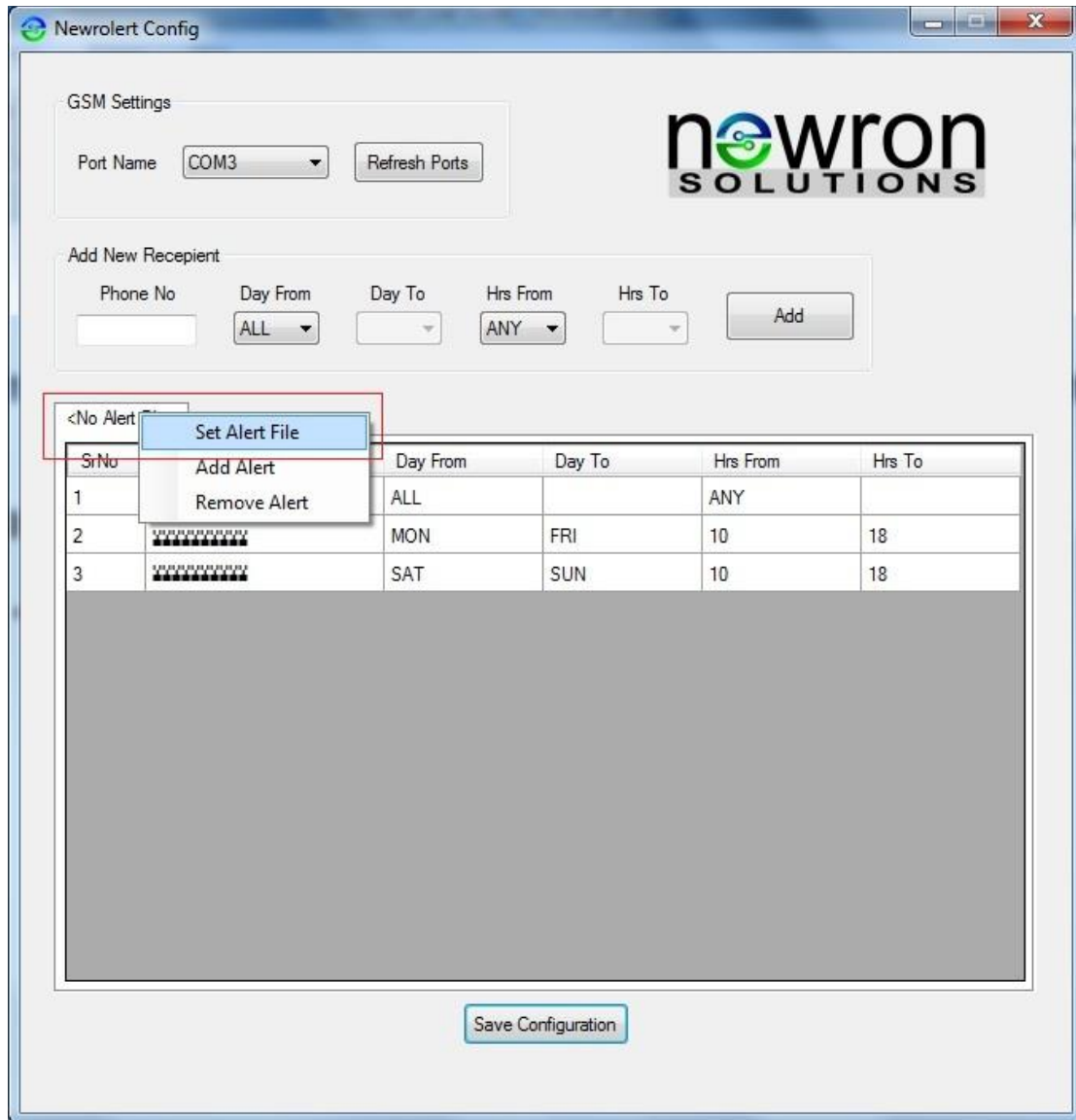
- Right click on the particular recipient and select “**Remove Recipient**” from pop-up menu.



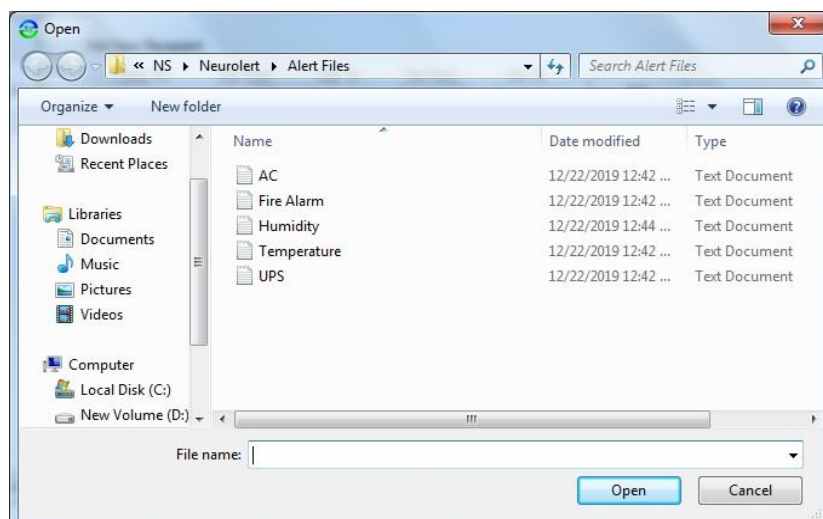
- Press “**Save Configuration**” button after removing the recipients.

## 6. Setting Alert File

- To set an alert file right click on alert tab, select **“Set Alert File”** from pop-up menu.

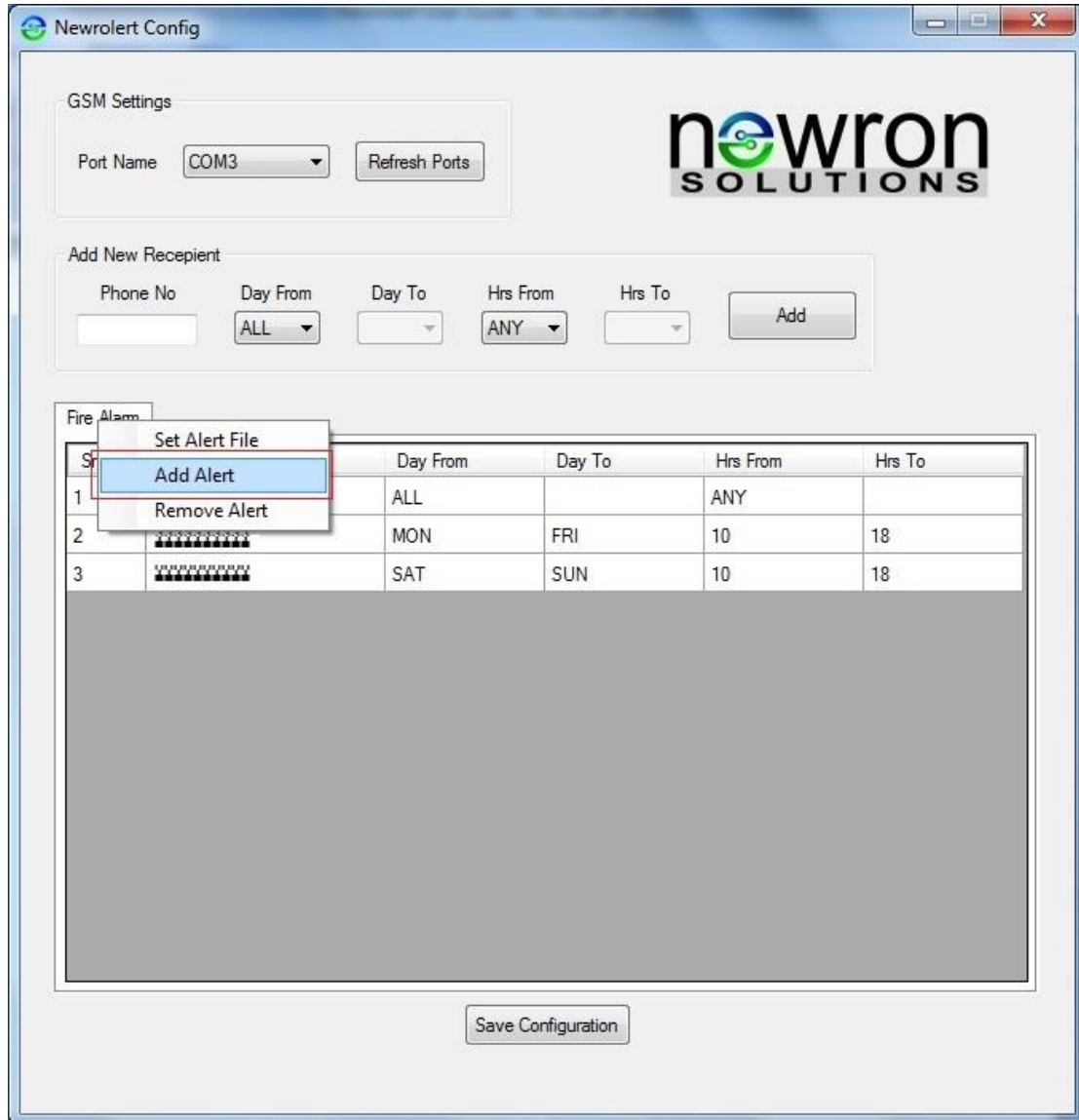


- Browse and select the alert file from the pop-up window



## 7. Adding New Alert Category


- To add a new alert category right click on alert tab, select “**Add Alert**” from pop-up menu. A new tab will be created.



- We can add up to 5 alert categories
- Now we can add / remove recipients as discussed under sections 4 / 5 for each category.
- Also set alert file for each category as discussed under section 6.
- Press “**Save Configuration**” button every time when changes are made in the configuration.



Newrolert Config



**GSM Settings**

Port Name:

**Add New Receptient**

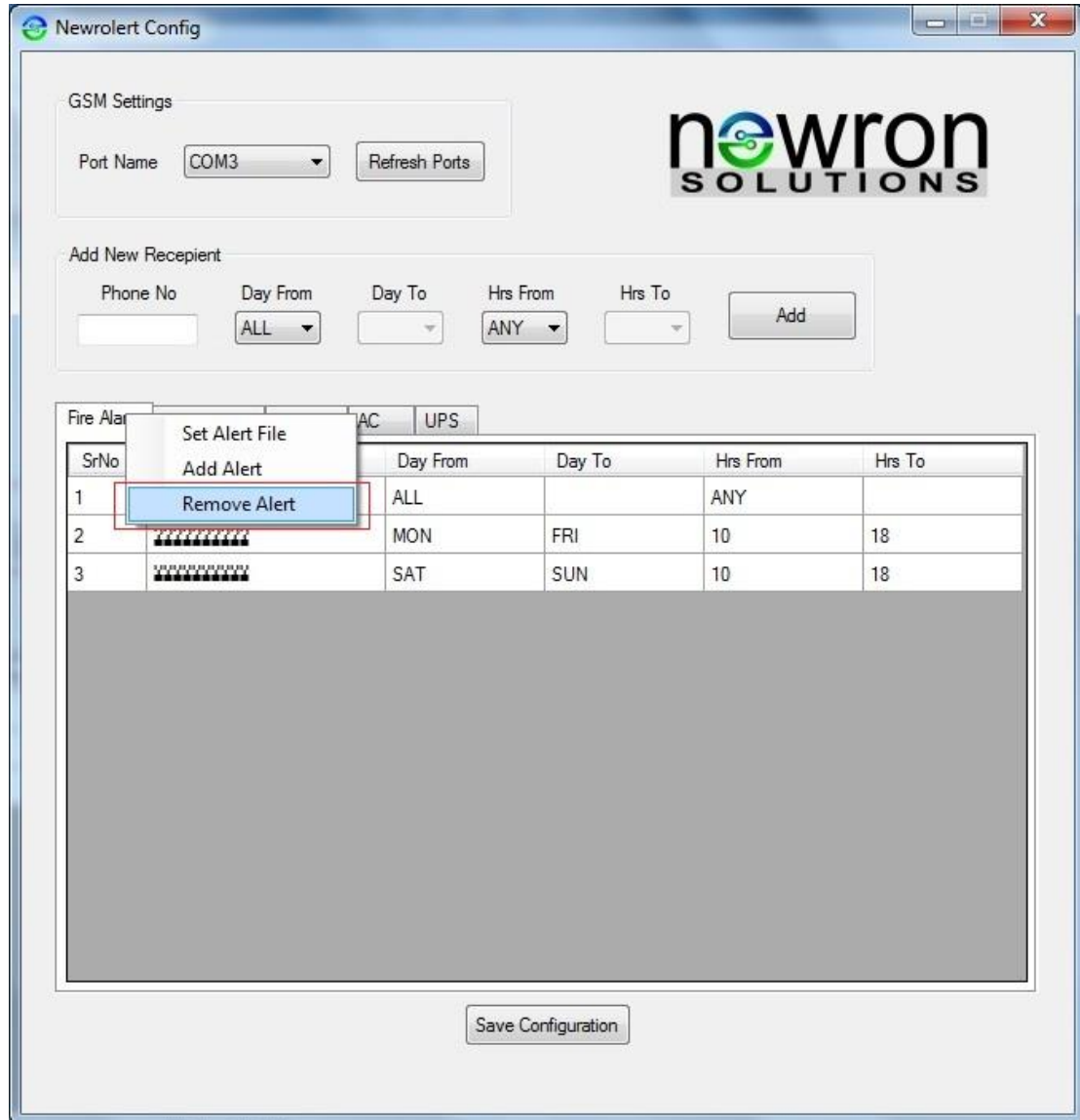
Phone No:  Day From:  Day To:  Hrs From:  Hrs To:

**Fire Alarm** | Temperature | Humidity | AC | UPS

SrNo	Phone No	Day From	Day To	Hrs From	Hrs To
9	XXXXXXXXXX	ALL		ANY	
10	XXXXXXXXXX	THU	FRI	10	14
11	XXXXXXXXXX	MON	SUN	00	23
12	XXXXXXXXXX	ALL		00	23
13	XXXXXXXXXX	ALL		ANY	
14	XXXXXXXXXX	ALL		ANY	
15	XXXXXXXXXX	SAT	SUN	00	08
16	XXXXXXXXXX	SAT	SUN	08	16
17	XXXXXXXXXX	SAT	SUN	16	23
18	XXXXXXXXXX	MON	FRI	16	23
19	XXXXXXXXXX	MON	FRI	00	10
20	XXXXXXXXXX	MON	FRI	ANY	

## 8. Removing Alert Category

- To remove alert category right click on alert tab which you want to delete, select “**Remove Alert**” from pop-up menu.



- Press “**Save Configuration**” button after removing the alert category.

## 9. Sending Test SMS

- To send test SMS right click on the particular recipient, select **“Send Test SMS”** from pop-up menu.

